

# Operations Manual

Apex Pro X1 Hydraulic Automatic Dough Press  
Model #: DP1350



**PROLUXE**  
WWW.PROLUXE.COM

Version: 040424

Proluxe is a leading manufacturer of food preparation and cooking equipment designed for the most demanding commercial kitchens. Proluxe equipment is a result of the highest quality engineering and time-tested design.

This manual includes installation, operation, and maintenance procedures for your new hydraulic dough press. Please read this manual carefully and keep it with your machine for proper operation and lasting service.

## INSTALLATION

### Domestic

Use a separate 15 amp AC circuit. Only industrial extension cords with proper wire size should be used; size 16/3 wire for distance up to 25 feet, and size 14/3 for distance up to 50 feet.

### International

Use a designated 16 amp AC circuit. Only industrial extension cords with proper wire size (2.5 sq. mm) shall be used. Make sure there is a proper electrical wall outlet located within reach of the cord and plug attached to the press.

Place the press in an area that allows for “swing clearance” of the lower platen plus vertical and horizontal clearance of the press itself.

## Limited Machine Warranty

Proluxe warrants this dough press machine, when operated under normal conditions, to be free from manufacturing defects in material and workmanship for a period of one year on parts and labor from the invoice date.

This warranty will be effective only when Proluxe authorizes the original purchaser to return the product to the factory in Perris, California freight prepaid and only when the product, upon examination, has proven to be defective. This warranty does not apply to any machine that has been subjected to misuse, negligence or accident. Proluxe shall not be liable for the injury, loss or damage, direct or consequential, arising out of the use or the inability to use the product. No claim of any kind shall be greater in amount than the sale price of the product or part to which claim is made.

This warranty given by the company, it is in lieu of any other warranties, expressed or implied, in law or in fact, including the warranties of merchantability and fitness for a particular use, and is accepted such by the purchaser in taking delivery of this product.

## SPECIFICATIONS

### Electrical:

120V/50-60Hz/1450W/12.5Amps/AC

Also available; specify when ordering:

Other options available:

- Voltage: 120/208/240
- Amps: 12.5/11.1/16.5
- Watts: 1500/2300/1500

Includes: 72" cord and NEMA approved plug.

Shipping Weight:

200lbs. (91kg.) - DP1350

Poids d'expédition:

200lbs. (91kg.) - DP1350



Protective Earth Terminal  
*Borne de terre de protection*



Caution - Warning  
*chaud - avertissement*

## INTERNATIONAL SYMBOLS

*Symboles internationaux*



Power Off  
*éteindre*



Power On  
*allumer*



Hot Surface  
*surface chaude*



Risk of Electrical Shock  
*Risque de choc électrique*

## SAFETY SUMMARY



Warning

To reduce the risk of electrical shock, do not remove or open cover. No user-serviceable parts inside. Refer servicing to qualified personnel.

*Avertissement*

*Pour réduire le risque de choc électrique, ne pas retirer ou couvercle ouvert Aucune pièce réparable par l'utilisateur, reportez-vous à du personnel qualifié.*



Warning

In case of power cord damage, do not attempt to repair or replace the power cord. Please contact the manufacturer or the local distributor.

### *Avertissement*

*Pour une protection continue contre l'incendie et de choc électrique, remplacer avec le même type et calibre du fusible. Mis fusible supplémentaire nominale max 3A, 120 Vac.*



### Warning

For continued protection against fire and electric shock, replace with the same type and rating fuse. Listed Supplemental Fuse rated max 3A, 120Vac.

### *Avertissement*

*Pour une protection continue contre l'incendie et de choc électrique, remplacer avec le même type et calibre du fusible. Mis fusible supplémentaire nominale max 3A, 120 Vac.*



### Caution Hot

Avoid touching hot surfaces while operating the machine.

### *Attention à chaud*

*Évitez de toucher les surfaces chaudes lorsque vous utilisez la machine.*



### Caution

When servicing or cleaning the machine, make sure that the power cord is removed from the wall socket.

During normal operation, the base of the machine must be installed or placed above the wall socket.

### *Avertissement*

*Lors de l'entretien ou du nettoyage de la machine, assurez-vous que le cordon d'alimentation est débranché de la prise murale.*

## OPERATION TEMPERATURE & TIMER CONTROL

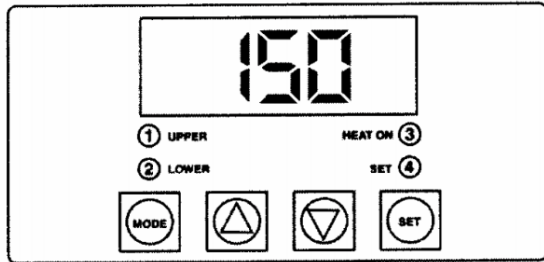


FIG. A

### Solid State Controller

This controller has three (3) control features:

1. Temperature – May be set from 100°-425°F (38°-163°C)
2. Time – Time may be set from 1 second to 10 minutes.
3. Counter – Cycle counter counts the number of applications from 1 to 9999 (see additional Notes – Counter).
4. “2 Lower” (Fig. A) Refers to models using upper and lower heated surfaces.

### Controller Operation

#### 1. Viewing the Modes of Operation:

To view the set points of temperature, timer, and counter, press MODE button to view the desired mode of operation.

#### 2. Changing Temperature:

Press MODE button until the temperature is displayed.

Press and hold SET button while pressing the UP (↑) and DOWN (↓) arrow buttons to the desired temperature setting.

#### 3. Changing Time:

Press MODE button until the time is displayed.

Press and hold SET button while pressing the UP (↑) and DOWN (↓) arrow buttons to desired timer setting.

#### 4. Resetting the Counter:

Press MODE button until the counter is displayed.

To reset the counter (# of cycles), simultaneously push UP (↑) or DOWN (↓) arrow buttons (approx. 5 seconds).

### Pressing Dough:

1. For best results, your dough should be proofed before pressing, but it will also press directly out of your refrigerator. Flour is not required to press a crust and **should not** be dusted on any part of the machine.

2. Press the On/Off button.

*Note: Initial temperature setting of 150°F has been shown to be acceptable for most dough formulations; however, you may have to determine the best temperature for your own dough by trial and error testing of your product at different temperature settings.*

3. Set the timer in accordance with company settings.

\*Remember that the timer does not actuate until the upper platen mates with the lower platen and resistance is felt.

4. Swing open the lower platen and apply a quick spray food release on the lower platen.
5. Place your dough in the center of the lower platen.
6. Close the platen and, with both hands, press the two green buttons on each side of the machine simultaneously.
7. Hold the buttons until resistance is felt then release at once. The timer will actuate and, when the time cycle is completed, the upper platen will rise automatically (timer is preset at the factory for six seconds, but this is easily changed by following the upcoming instructions.)
8. Remove the crust, place on a pan or peel, add toppings and bake.

## RECOMMENDED SEASONING & CLEANING PROCEDURES

Before use, you must properly season your platens to prevent your dough from sticking.

### Tools Required:

- Food release
- Soapy water solution
- Washcloth
- Paper towels

**DO NOT** use steel wool or harsh abrasives, it will you will cause costly damage.

**DONOT** use power washing equipment on press, will cause costly damage to electronics.

1. Before cleaning make sure the unit is turned off.
2. Spray lower platen with approved food release/oil spray.
3. Wipe excess oil across upper and lower platens.
4. Mix a warm dish soap and water solution.
5. Wipe lower and upper platen clean with a damp cloth.

## PREVENTATIVE MAINTENANCE

For a long lifespan, the following preventative maintenance should be followed:

### Daily Care:

1. Platens: Turn your machine off and allow it to cool down before attempting to clean. These platens should only be cleaned with mild soap and warm water then wiped off with a clean, soft cloth or soft sponge.

2. Exterior surfaces: Wipe daily with mild soap and warm water will do the job quite nicely.

### Service Problems:

Contact our factory at (800) 624-6717 (U.S. only) or an approved service agency. When contacting the factory for information, parts or service instructions, please provide the serial number of the machine be provided. This number can be found on the serial plate located on the rear of the machine.



### Refilling hydraulic oil:

Recommended ISO/AW46 Hydraulic oil

Capacity of Reservoir is 650 ml

Remove threaded breather, fill 200 ml at a time and add as desired. Replace threaded breather.

## Troubleshoot Guide - Model #: DP1350

Problem	Cause	Action	Ref #
Power button on digital controller face is depressed but doesn't turn on.	1. Power cord is not plugged in.	1. Plug the power cord into wall receptacle and power button.	60
	2. Circuit breaker is tripped off in the site's breaker box.	2. Reset circuit breaker that the grill is plugged into. Depress power button to turn on.	-----
	3. Transformer has taken an electrical surge and is damaged.	3. Replace Transformer after you check secondary side of transformer. If working properly, you should receive 12vdc.	66
	4. Check voltage on the secondary side of the transformer. If you read 12VDC then you are receiving voltage to the controller.	4. Replace controller. Controller should be on once the power button is depressed.	76
	5. Possible blown fuse.	5. Replace fuse.	39
Digital controller's LED's are scrambled or randomly erratic. If when turning on, the display will first go to segment check	1. Possibly a component on the Digital controller is damaged.	Replace digital controller.	-----
	2. Control needs to reset.	While unit is on unplug unit, wait for 1 min. Then plug machine on again and depress power button.	76
Digital controller on startup goes through	The relay driver on the digital control may be blown.	Replace digital controller.	76

LED segment check (8888) then to version # and then loops back to to the above reboot.			
Digital display shows PROB. No heat on upper platen.	Sensor lost it's continuity as shown on a muti-meter.	Disconnect prob that is open (no continuity as shown on a multi-meter. Must replace sensor (RTD). Do not cut and splice new sensor. Install new 2000 ohm RTD sensor to under side of heat platen and reconnect to the controller.	A1.10
When depressing the tactile button on digital controller, nothing happens.	The tactile buttons under the overlay may be not close enough to activate. Same goes if the buttons are already pressed by overlay without depressing button.	Carefully tighten the nuts on the back of the controller until button activate. Same goes in reverse if buttons are held down by the overlay.	----
Press does not close when pressing the two, green, start buttons	<ol style="list-style-type: none"> <li>1. Did not simultaneously press the start buttons exactly at the same time.</li> <li>2. The lower platen switch mounted on the base is not in contact to complete circuit.</li> </ol>	<ol style="list-style-type: none"> <li>1. Try pressing both buttons exactly at the same time. This is a safety feature.</li> <li>2. Make sure the roller plunger comes into contact (clicking noise). This is also a safety feature that both platens are aligned.</li> </ol>	82
Digital display shows relay and particular zone is overheating.	1. The relay on the switched side is not opening to regulate temperature.	1. Replace the relay.	92
Beeper not functioning	1. Beeper on digital control board failed.	1. Replace digital controller board.	76
If setpoint is reached but slightly off in temperature.	Offset may need to be calibrated and adjusted.	Call (800) 624-6717 ext. 129 for instructions.	
Heater platen overheating	If the relay (depending on the year of the model) on the coil side are receiving 12vdc indicates the controller is functioning properly. On the switching side of the relay, is there 120 vac going to the heater in question. If there is no voltage on the to the switching side of the relay to the heaters, the relay is not	Replace relay If the controller's heat-on LED is not lit indicating the controller is working properly.	55

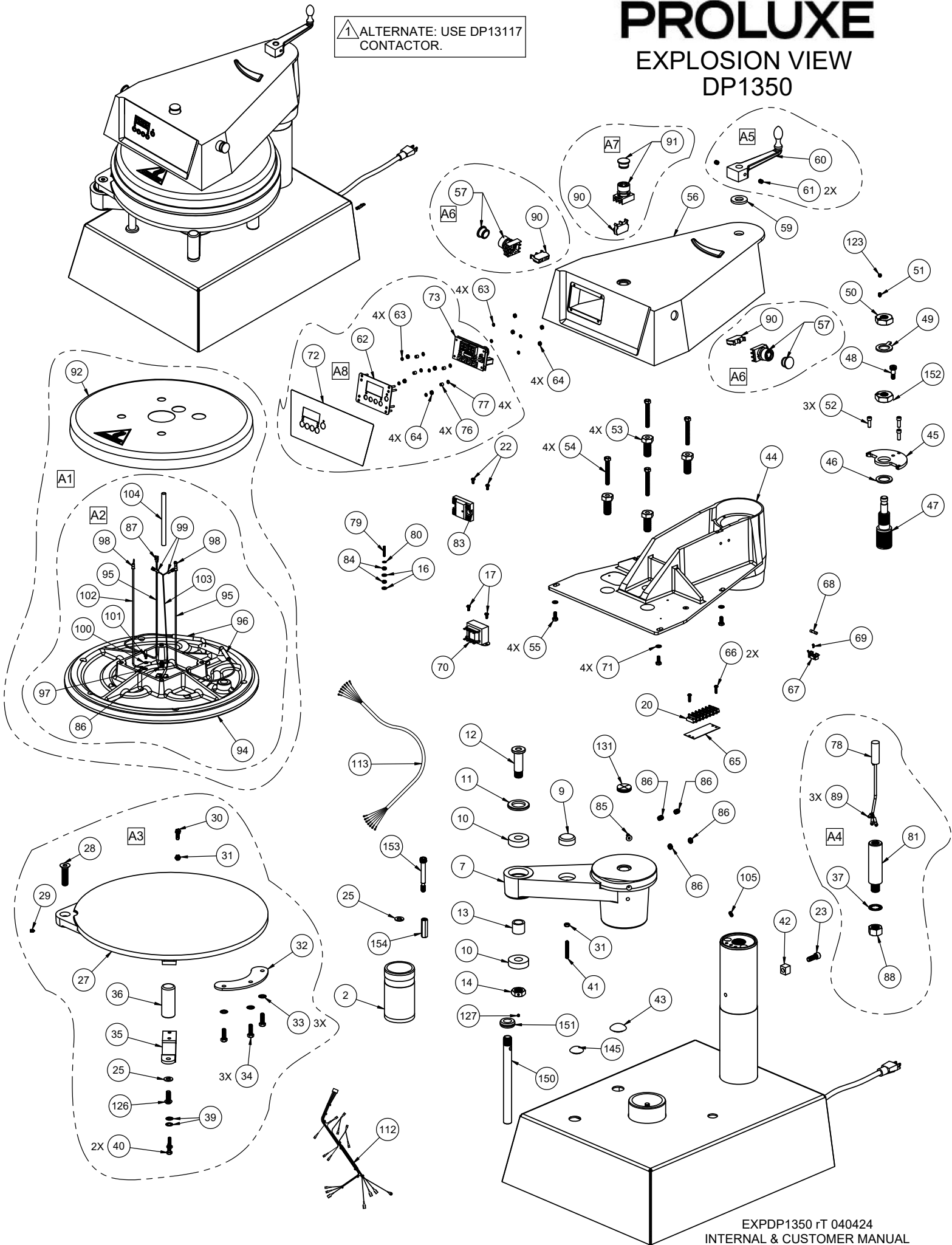
	working properly.		
Both upper and lower platen not aligned when activating. You may experience a shifting of the platens when coming into contact, or striking noise.	Upper and lower platen are misaligned.	On the left side of the post collar (#35) are back-to-back set screws. Remove the first locking set screw. Adjust stopping set screw to align platen *IMPORTANT* must reduce air pressure to a minimum as not to damaging closing platens. After alignment is complete, re-install locking set screw as not to move the alignment set screw.	17
Dough is not a consistent thickness.	Adjust upper platen for level press	Underneath the housing there is 4 stacked hex bolts sitting over the upper platen attached to the arm. The top bolts are called locking bolts. The 4 larger hex bolts below are adjustment bolts. Break free the 4 locking bolts. With an open end wrench adjust the bolts (1/8 turn at a time). After testing, tighten the locking bolts making sure not to move the larger adjustment bolts.	11 And 12

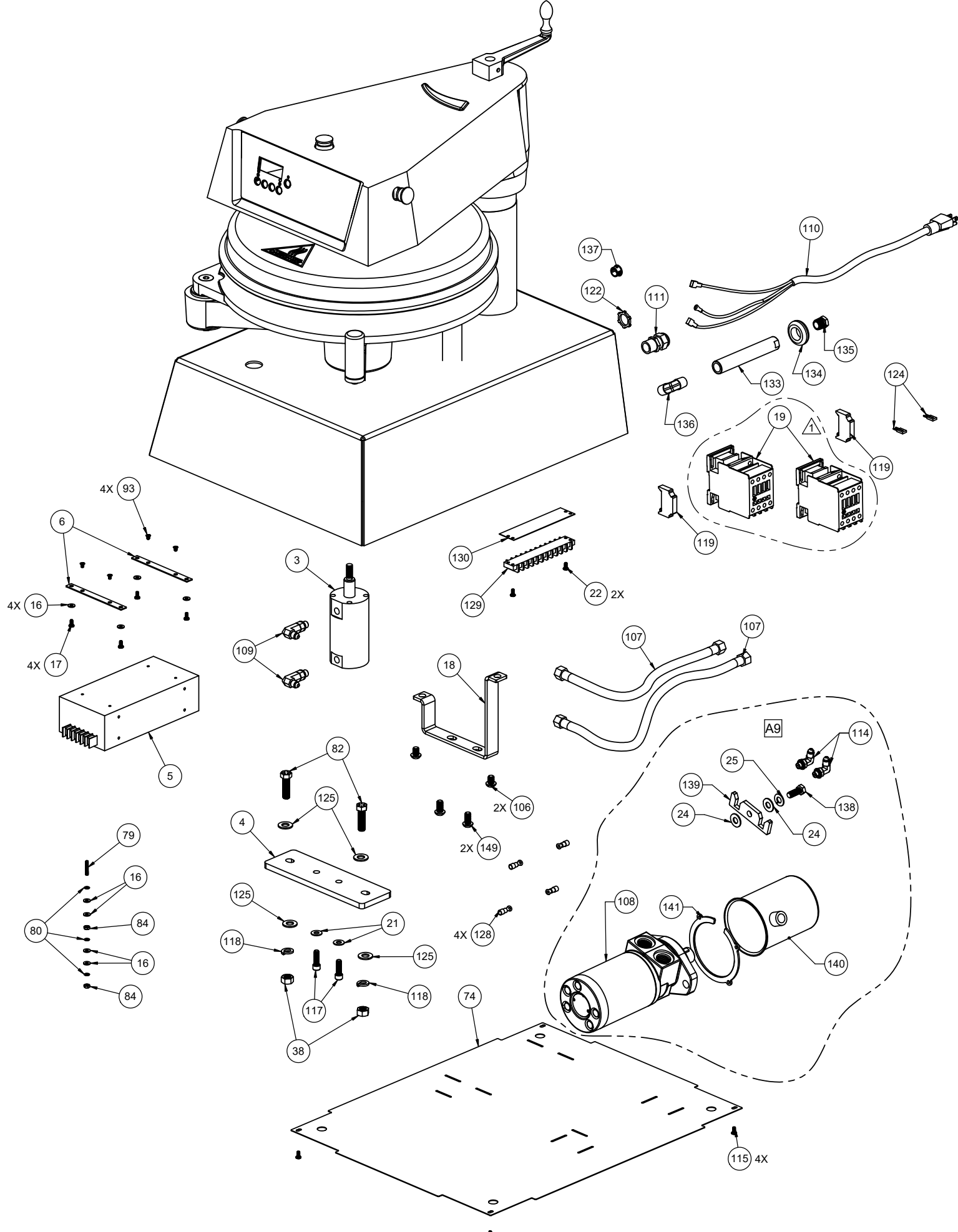
# PROLUXE

## EXPLOSION VIEW

### DP1350

1 ALTERNATE: USE DP13117 CONTACTOR.





## PARTS LIST FOR DP1350

ITEM NO.	DESCRIPTION	DP1350A 120 - AC	DP1350TA 120 - AC	DP1350B 240 - AC	DP1350E 208 - AC	DP1350TE 208 - AC	DP1350CEB 240 - AC	DP1350CEC 220 - AC	DP1350TCEC 220 - AC	DP1350GCEC 220 - AC	DP1350TGCEC 220 - AC	QTY.
1	BASE AND POST WELDING ASSY. WITHOUT KEYWAY	DP1315501	DP1315501	DP1315501	DP1315501	DP1315501	DP1315501	DP1315501	DP1315501	DP1315501	DP1315501	1
2	PISTON GUIDE WELDING ASSEMBLY WITHOUT KEYWAY	DP13157	DP13157	DP13157	DP13157	DP13157	DP13157	DP13157	DP13157	DP13157	DP13157	1
3	CYLINDER, HYDRAULIC - 40 MM BORE x 1.687 STROKE	DP13140	DP13140	DP13140	DP13140	DP13140	DP13140	DP13140	DP13140	DP13140	DP13140	1
4	MOUNTING PLATE	DP13105	DP13105	DP13105	DP13105	DP13105	DP13105	DP13105	DP13105	DP13105	DP13105	1
5	POWER SUPPLY, 24VDC	DP13110	DP13110	DP13110	DP13110	DP13110	DP13110	DP13110	DP13110	DP13110	DP13110	1
6	ELECTRICAL BOX MOUNTING BRACKET	DP13107	DP13107	DP13107	DP13107	DP13107	DP13107	DP13107	DP13107	DP13107	DP13107	2
7	PIVOT ARM MACHINED, DP1350	PL1315201	PL1315201	PL1315201	PL1315201	PL1315201	PL1315201	PL1315201	PL1315201	PL1315201	PL1315201	1
9	SWING ARM/LOWER PLATEN BUMPER	110503450	110503450	110503450	110503450	110503450	110503450	110503450	110503450	110503450	110503450	1
10	BEARING, DP1300	62042NSL	62042NSL	62042NSL	62042NSL	62042NSL	62042NSL	62042NSL	62042NSL	62042NSL	62042NSL	2
11	SWING AWAY WASHER	110249049	110249049	110249049	110249049	110249049	110249049	110249049	110249049	110249049	110249049	1
12	STUD, LOWER PLATEN, DP1300	110249065	110249065	110249065	110249065	110249065	110249065	110249065	110249065	110249065	110249065	1
13	BEARING SLEEVE SPACER	11046	11046	11046	11046	11046	11046	11046	11046	11046	11046	1
14	NUT, JAM (PIVOT ARM) MACHINED	110102570	110102570	110102570	110102570	110102570	110102570	110102570	110102570	110102570	110102570	1
16	WASHER, SAE #8	WSAE8	WSAE8	WSAE8	WSAE8	WSAE8	WSAE8	WSAE8	WSAE8	WSAE8	WSAE8	10
17	SCREW, PHILLIPS PAN HEAD 8-32 X 1/4	SP83214	SP83214	SP83214	SP83214	SP83214	SP83214	SP83214	SP83214	SP83214	SP83214	6
18	PUMP MOUNTING BRACKET	DP13108	DP13108	DP13108	DP13108	DP13108	DP13108	DP13108	DP13108	DP13108	DP13108	1
19	CONTACTOR, FOUR-POLE, DC COIL, LOVATO	DP29401	DP29401	DP29401	DP29401	DP29401	DP29401	DP29401	DP29401	DP29401	DP29401	2
20	TERMINAL BLOCK STAGE #7	6017	6017	6017	6017	6017	6017	6017	6017	6017	6017	1
21	WASHER, SAE 5/16	WSAE516	WSAE516	WSAE516	WSAE516	WSAE516	WSAE516	WSAE516	WSAE516	WSAE516	WSAE516	2
22	SCREW, PHILLIPS PAN HEAD 8-32 X 3/8	SP83238	SP83238	SP83238	SP83238	SP83238	SP83238	SP83238	SP83238	SP83238	SP83238	4
23	SCREW, SOCKET HEAD 3/8-16 X 1	SSH38161	SSH38161	SSH38161	SSH38161	SSH38161	SSH38161	SSH38161	SSH38161	SSH38161	SSH38161	1
24	WASHER, SAE 3/8"	WSAE38	WSAE38	WSAE38	WSAE38	WSAE38	WSAE38	WSAE38	WSAE38	WSAE38	WSAE38	2
25	WASHER, LOCK 3/8	WL38	WL38	WL38	WL38	WL38	WL38	WL38	WL38	WL38	WL38	3
28	SCREW, FLAT HEAD SOCKET 1/2-20 X 2	SF12202	SF12202	SF12202	SF12202	SF12202	SF12202	SF12202	SF12202	SF12202	SF12202	1
29	SCREW, SET 1/4-20X3/8" CONE POINT	SST142038CP	SST142038CP	SST142038CP	SST142038CP	SST142038CP	SST142038CP	SST142038CP	SST142038CP	SST142038CP	SST142038CP	1
30	BOLT, HEX 1/4-20 X 1-1/2, GRD. 5 TAP	BH1420112G5T	BH1420112G5T	BH1420112G5T	BH1420112G5T	BH1420112G5T	BH1420112G5T	BH1420112G5T	BH1420112G5T	BH1420112G5T	BH1420112G5T	1
31	NUT, HEX 1/4-20	NH1420	NH1420	NH1420	NH1420	NH1420	NH1420	NH1420	NH1420	NH1420	NH1420	2
32	GUIDE, LOWER PLATEN	11044	11044	11044	11044	11044	11044	11044	11044	11044	11044	1
33	WASHER, LOCK INTERNAL TOOTH 5/16"	WLIT516	WLIT516	WLIT516	WLIT516	WLIT516	WLIT516	WLIT516	WLIT516	WLIT516	WLIT516	3
34	5/16 - 18 x 1 SS., BOLT HEX HEAD	BH516181S	BH516181S	BH516181S	BH516181S	BH516181S	BH516181S	BH516181S	BH516181S	BH516181S	BH516181S	3
35	HANDLE BRACKET	11045336301	11045336301	11045336301	11045336301	11045336301	11045336301	11045336301	11045336301	11045336301	11045336301	1
36	KNOB, PRESSURE ALUMINUM	MPSK215	MPSK215	MPSK215	MPSK215	MPSK215	MPSK215	MPSK215	MPSK215	MPSK215	MPSK215	1
37	WASHER, LOCK INTRNL TOOTH 3/4"	WLIT34	WLIT34	WLIT34	WLIT34	WLIT34	WLIT34	WLIT34	WLIT34	WLIT34	WLIT34	1
38	NUT, HEX SELF LOCKING 7/16-20	NHSL71620	NHSL71620	NHSL71620	NHSL71620	NHSL71620	NHSL71620	NHSL71620	NHSL71620	NHSL71620	NHSL71620	2
39	WASHER, SPLIT LOCK 1/4"	WLIT14	WLIT14	WLIT14	WLIT14	WLIT14	WLIT14	WLIT14	WLIT14	WLIT14	WLIT14	2
40	HEX BOLT CAP 1/4-20 X 7/8" LONG S.S.	BH142078S	BH142078S	BH142078S	BH142078S	BH142078S	BH142078S	BH142078S	BH142078S	BH142078S	BH142078S	2
41	SCREW SET 1/4"-20 X 1 3/4"	SST1420134	SST1420134	SST1420134	SST1420134	SST1420134	SST1420134	SST1420134	SST1420134	SST1420134	SST1420134	1
42	ANTI ROTATION BAR ARM-PIZZA MACHINE	110148	110148	110148	110148	110148	110148	110148	110148	110148	110148	1
43	GUIDE POST HOLE PLUG, (1.093", KOS LT 3/4)	DP13143	DP13143	DP13143	DP13143	DP13143	DP13143	DP13143	DP13143	DP13143	DP13143	1
44	ARM MACHINED	DP1822101	DP1822101	DP1822101	DP1822101	DP1822101	DP1822101	DP1822101	DP1822101	DP1822101	DP1822101	1
45	THRUST PLATE	110230058	110230058	110230058	110230058	110230058	110230058	110230058	110230058	110230058	110230058	1
46	THRUST WASHER	11059	11059	11059	11059	11059	11059	11059	11059	11059	11059	1
47	SCREW, ADJUSTMENT POST, DP1300	11042	11042	11042	11042	11042	11042	11042	11042	11042	11042	1
48	BOLT, STRIPPER 3/8" X 1/2"	BS3812	BS3812	BS3812	BS3812	BS3812	BS3812	BS3812	BS3812	BS3812	BS3812	1
49	BRACKET, ADJUSTMENT STOP	11065	11065	11065	11065	11065	11065	11065	11065	11065	11065	1
50	LOCKING JAM NUT	11070	11070	11070	11070	11070	11070	11070	11070	11070	11070	1
51	SCREW, SET 1/4-20 X 3/8 CONE POINT	SST142038CP	SST142038CP	SST142038CP	SST142038CP	SST142038CP	SST142038CP	SST142038CP	SST142038CP	SST142038CP	SST142038CP	1
52	SCREW, SOCKET HEAD 1/4-20 X 3/4"	SSH142034	SSH142034	SSH142034	SSH142034	SSH142034	SSH142034	SSH142034	SSH142034	SSH142034	SSH142034	3
53	BOLT, U.P. ADJUSTMENT	11067	11067	11067	11067	11067	11067	11067	11067	11067	11067	4
54	5/16-18 X 2-1/2" HEX BOLT GR5, DP1300	BH51618212G5	BH51618212G5	BH51618212G5	BH51618212G5	BH51618212G5	BH51618212G5	BH51618212G5	BH51618212G5	BH51618212G5	BH51618212G5	4
55	BOLT, HEX 1/4-20 X 5/8" ZINC PLATED	BH142058	BH142058	BH142058	BH142058	BH142058	BH142058	BH142058	BH142058	BH142058	BH142058	4
56	HOUSING, MACHINING	11010252201	11010252201	11010252201	11010252201	11010252201	11010252201	11010252201	11010252201	11010252201	11010252201	1
57	BUTTON GREEN MUSHROOM CAP	11051845R	11051845R	11051845R	11051845R	11051845R	11051845R	11051845R	11051845R	11051845R	11051845R	2
59	CRANK SPACER	11064	11064	11064	11064	11064	11064	11064	11064	11064	11064	1
60	CRANK HANDLE, ADJUSTMENT	1106001	1106001	1106001	1106001	1106001	1106001	1106001	1106001	1106001	1106001	1
61	SCREW, SET 5/16-18 X 3/8 SET SCREW KNURLED CUP POINT	SST5161838KN	SST5161838KN	SST5161838KN	SST5161838KN	SST5161838KN	SST5161838KN	SST5161838KN	SST5161838KN	SST5161838KN	SST5161838KN	2
62	ASSEMBLY, CONTROL FACIA	11086027	11086027	11086027	11086027	11086027	11086027	11086027	11086027	11086027	11086027	1
63	WASHER, INTERNAL TOOTH LOCK #6	WLIT6	WLIT6	WLIT6	WLIT6	WLIT6	WLIT6	WLIT6	WLIT6	WLIT6	WLIT6	8
64	NUT, HEX 6-32	NH632	NH632	NH632	NH632	NH632	NH632	NH632	NH632	NH632	NH632	8
65	MARKER STRIP #7	MS6017	MS6017	MS6017	MS6017	MS6017	MS6017	MS6017	MS6017	MS6017	MS6017	1
66	SCREW, PAN HD 8-32 X 5/8"	SP83258	SP83258	SP83258	SP83258	SP83258	SP83258	SP83258	SP83258	SP83258	SP83258	2
67	FUSE HOLDER 1 AMP	MPPF708	MPPF708	MPPF708	MPPF708	MPPF708	MPPF708	MPPF708	MPPF708	MPPF708	MPPF708	1
68	FUSE BUSS 1 AMP	MPPF701R	MPPF701R	MPPF701R	MPPF701R	MPPF701R	MPPF701R	MPPF701R	MPPF701R	MPPF701R	MPPF701R	1
69	SCREW, PHILLIPS PAN 2-56x1/4	SP25614	SP25614	SP25614	SP25614	SP25614	SP25614	SP25614	SP25614	SP25614	SP25614	1
70	TRANSFORMER	MPP700R	MPP700R	MPP700R	MPP700R	MPP700R	MPP700R	MPP700R	MPP700R	MPP700R	MPP700R	1
71	WASHER, SAE 1/4	WSAE14	WSAE14	WSAE14	WSAE14	WSAE14	WSAE14	WSAE14	WSAE14	WSAE14	WSAE14	4
72	OVERLAY-BLUE, DP1300/DP1350, DP2350/DP2300	ODP2350B	ODP2350B	ODP2350B	ODP2350B	ODP2350B	ODP2350B	ODP2350B	ODP2350B	ODP2350B	ODP2350B	1

## PARTS LIST FOR DP1350

ITEM NO.	DESCRIPTION	DP1350A 120 - AC	DP1350TA 120 - AC	DP1350B 240 - AC	DP1350E 208 - AC	DP1350TE 208 - AC	DP1350CEB 240 - AC	DP1350CEC 220 - AC	DP1350TCEC 220 - AC	DP1350GCEC 220 - AC	DP1350TGCEC 220 - AC	QTY.
73	DIGITAL CONTROL REV. 5.06	DP131052	DP131052	DP131052	DP131052	DP131052	DP131052	DP131052	DP131052	DP131052	DP131052	1
74	BOTTOM COVER	DP13154	DP13154	DP13154	DP13154	DP13154	DP13154	DP13154	DP13154	DP13154	DP13154	1
75	OPERATION MANUAL	MDP1350	MDP1350	MDP1350	MDP1350	MDP1350	MDP1350	MDP1350	MDP1350	MDP1350	MDP1350	1
76	NYLON SPACER, 1/4 X .141 X 9/32 LONG	110969111	110969111	110969111	110969111	110969111	110969111	110969111	110969111	110969111	110969111	4
77	WASHER, STEEL	311150019	311150019	311150019	311150019	311150019	311150019	311150019	311150019	311150019	311150019	4
78	SWITCH, PROXIMITY SENSOR	PL1169441	PL1169441	PL1169441	PL1169441	PL1169441	PL1169441	PL1169441	PL1169441	PL1169441	PL1169441	1
79	SCREW, SET 8-32X1	SST8321	SST8321	SST8321	SST8321	SST8321	SST8321	SST8321	SST8321	SST8321	SST8321	2
80	WASHER, INTERNAL TOOTH LOCK #8	WLIT8	WLIT8	WLIT8	WLIT8	WLIT8	WLIT8	WLIT8	WLIT8	WLIT8	WLIT8	4
81	HOUSING, SWITCH PROXIMITY SENSOR	110103	110103	110103	110103	110103	110103	110103	110103	110103	110103	4
82	HEX BOLT 7/16-20 X 2" GRADE 8	BH716202G8	BH716202G8	BH716202G8	BH716202G8	BH716202G8	BH716202G8	BH716202G8	BH716202G8	BH716202G8	BH716202G8	2
83	RELAY, SOLID STATE, 25 AMP, 3-32 VDC	PL2425	PL2425	PL2425	PL2425	PL2425	PL2425	PL2425	PL2425	PL2425	PL2425	1
84	NUT, HEX 8-32	NH832	NH832	NH832	NH832	NH832	NH832	NH832	NH832	NH832	NH832	4
85	SCREW, SOCKET FLAT HEAD 1/4-20 X 3/4	SF142034	SF142034	SF142034	SF142034	SF142034	SF142034	SF142034	SF142034	SF142034	SF142034	1
86	SCREW, SET 3/8-16 X 1/2	SST381612	SST381612	SST381612	SST381612	SST381612	SST381612	SST381612	SST381612	SST381612	SST381612	5
87	TERMINAL, FORK #10 10-12 GA	TF101012	TF101012	TF101012	TF101012	TF101012	TF101012	TF101012	TF101012	TF101012	TF101012	1
88	NUT, HEX 3/4-16	NH3416	NH3416	NH3416	NH3416	NH3416	NH3416	NH3416	NH3416	NH3416	NH3416	1
89	TERMINAL, #6 RING 18-22 GA	2202	2202	2202	2202	2202	2202	2202	2202	2202	2202	3
90	CONTACT N/O SLEW TYPE, GE #P9B10VN	110101751	110101751	110101751	110101751	110101751	110101751	110101751	110101751	110101751	110101751	3
91	BUTTON BLACK MUSHROOM CAP	11051850R	11051850R	11051850R	11051850R	11051850R	11051850R	11051850R	11051850R	11051850R	11051850R	1
92	UPPER HEAT SHROUD	1109336	1109336	1109336	1109336	1109336	1109336	1109336	1109336	1109336	1109336	1
93	8-32 X 1/4" PHIL. HD 100 DEG., SCREW STAINLESS STEEL	SF83214S	SF83214S	SF83214S	SF83214S	SF83214S	SF83214S	SF83214S	SF83214S	SF83214S	SF83214S	4
99	TERMINAL, QD 3/16 X 18-22 GA	2280	2280	2280	2280	2280	2280	2280	2280	2280	2280	2
100	WASHER, SAE #6	WSAE6	WSAE6	WSAE6	WSAE6	WSAE6	WSAE6	WSAE6	WSAE6	WSAE6	WSAE6	1
101	SCREW, PAN HEAD 6-32 X 1/4	SP63214	SP63214	SP63214	SP63214	SP63214	SP63214	SP63214	SP63214	SP63214	SP63214	1
102	WIRE, TFE 14GA. GREEN	WTFE14G	WTFE14G	WTFE14G	WTFE14G	WTFE14G	WTFE14G	WTFE14G	WTFE14G	WTFE14G	WTFE14G	1.5 FT.
103	2000 OHM RTD, SENSOR ASSEMBLY	110949110	110949110	110949110	110949110	110949110	110949110	110949110	110949110	110949110	110949110	1
104	SLEEVEING, PVC WIRE	OPVC1050	OPVC1050	OPVC1050	OPVC1050	OPVC1050	OPVC1050	OPVC1050	OPVC1050	OPVC1050	OPVC1050	.16 FT.
105	SCREW, SET 1/4-20 X 1/2"	SST142012	SST142012	SST142012	SST142012	SST142012	SST142012	SST142012	SST142012	SST142012	SST142012	1
106	SCREW BUTTON HEAD 3/8-16 X 1/2	SB381612	SB381612	SB381612	SB381612	SB381612	SB381612	SB381612	SB381612	SB381612	SB381612	2
107	HYDRAULIC HOSES	DP13141	DP13141	DP13141	DP13141	DP13141	DP13141	DP13141	DP13141	DP13141	DP13141	2
108	HYDRAULIC PUMP/MOTOR	DP13146	DP13146	DP13146	DP13146	DP13146	DP13146	DP13146	DP13146	DP13146	DP13146	1
109	90 DEGREE ELBOW X-LONG FORGE	DP13158	DP13158	DP13158	DP13158	DP13158	DP13158	DP13158	DP13158	DP13158	DP13158	2
110	POWER CORD	110969174	110969174	110969175	1101009176	1101009176	MPPW202	MPPW202	MPPW202	DP149203	DP149203	1
111	STRAIN RELIEF	3231	3231	3231	3231	3231	3231	3231	3231	3231	3231	1
112	WIRE HARNESS	DP13150	DP13150	DP13150	DP13150	DP13150	DP13150	DP13150	DP13150	DP13150	DP13150	1
113	CABLE, POWER DISTRIBUTION	DP13168	DP13168	DP13168	DP13168	DP13168	DP13168	DP13168	DP13168	DP13168	DP13168	1
114	PORT FITTING	DP13121	DP13121	DP13121	DP13121	DP13121	DP13121	DP13121	DP13121	DP13121	DP13121	2
115	PAN HEAD SLOTTED 8-32 X 3/8" PLATED	SPS83238	SPS83238	SPS83238	SPS83238	SPS83238	SPS83238	SPS83238	SPS83238	SPS83238	SPS83238	4
117	SCREW, SOCKET HEAD 5/16-18X1"	SSH516181D	SSH516181D	SSH516181D	SSH516181D	SSH516181D	SSH516181D	SSH516181D	SSH516181D	SSH516181D	SSH516181D	2
118	WASHER, LOCK 7/16	WL716	WL716	WL716	WL716	WL716	WL716	WL716	WL716	WL716	WL716	2
119	RAIL LOCK	DP13122	DP13122	DP13122	DP13122	DP13122	DP13122	DP13122	DP13122	DP13122	DP13122	2
122	NUT, CONDUIT 1/2"	NC12	NC12	NC12	NC12	NC12	NC12	NC12	NC12	NC12	NC12	1
123	SCREW, SET 1/4-20 X 1/4	SST142014	SST142014	SST142014	SST142014	SST142014	SST142014	SST142014	SST142014	SST142014	SST142014	1
124	BRIDGE, PLUG IN, 2, RED, CROSS CONNECTIONS	110116920	110116920	110116920	110116920	110116920	110116920	110116920	110116920	110116920	110116920	2
125	WASHER, SAE 7/16	WSAE716	WSAE716	WSAE716	WSAE716	WSAE716	WSAE716	WSAE716	WSAE716	WSAE716	WSAE716	4
126	SCREW BUTTON HD 3/8-16X1	SB38161	SB38161	SB38161	SB38161	SB38161	SB38161	SB38161	SB38161	SB38161	SB38161	1
127	SCREW, SET 10-32 X 3/16"	SST1032316	SST1032316	SST1032316	SST1032316	SST1032316	SST1032316	SST1032316	SST1032316	SST1032316	SST1032316	1
128	TERMINAL RING 12-10 GA #6	1402	1402	1402	1402	1402	1402	1402	1402	1402	1402	4
129	TERMINAL BLOCK #11	60111	60111	60111	60111	60111	60111	60111	60111	60111	60111	1
130	MARKER STRIP #11	MS60111	MS60111	MS60111	MS60111	MS60111	MS60111	MS60111	MS60111	MS60111	MS60111	1
131	WHITE CLOSURE PLUG 0.5 IN.	PL14005WH	PL14005WH	PL14005WH	PL14005WH	PL14005WH	PL14005WH	PL14005WH	PL14005WH	PL14005WH	PL14005WH	1
133	FITTING EXTENSION	DP131620	DP131620	DP131620	DP131620	DP131620	DP131620	DP131620	DP131620	DP131620	DP131620	1
134	GROMMET	DP131010	DP131010	DP131010	DP131010	DP131010	DP131010	DP131010	DP131010	DP131010	DP131010	1
135	BREATHER VENT	DP131011	DP131011	DP131011	DP131011	DP131011	DP131011	DP131011	DP131011	DP131011	DP131011	1
136	ELBOW, MALE 3/8 BRASS	23038	23038	23038	23038	23038	23038	23038	23038	23038	23038	1
137	ROUND PLUG	DP17502	DP17502	DP17502	DP17502	DP17502	DP17502	DP17502	DP17502	DP17502	DP17502	1
138	BOLT, HEX 3/8 - 16 X 1	BH38161	BH38161	BH38161	BH38161	BH38161	BH38161	BH38161	BH38161	BH38161	BH38161	1
139	SPACER, PUMP	DP2700C1	DP2700C1	DP2700C1	DP2700C1	DP2700C1	DP2700C1	DP2700C1	DP2700C1	DP2700C1	DP2700C1	1
140	OIL CANISTER W/O-RING	DP13148	DP13148	DP13148	DP13148	DP13148	DP13148	DP13148	DP13148	DP13148	DP13148	1
141	HOLD DOWN GASKET	DP2700C2	DP2700C2	DP2700C2	DP2700C2	DP2700C2	DP2700C2	DP2700C2	DP2700C2	DP2700C2	DP2700C2	1
145	PROXIMITY SWITCH PLUG	DP13144	DP13144	DP13144	DP13144	DP13144	DP13144	DP13144	DP13144	DP13144	DP13144	1
148	HYDRAULIC FLUID	OIL-33	OIL-33	OIL-33	OIL-33	OIL-33	OIL-33	OIL-33	OIL-33	OIL-33	OIL-33	650 MIL.
149	BUTTON HEAD SCREW 3/8-16 X 3/4	SB381634	SB381634	SB381634	SB381634	SB381634	SB381634	SB381634	SB381634	SB381634	SB381634	2
150	POST, GUIDE 6.55X.75	11023004	11023004	11023004	11023004	11023004	11023004	11023004	11023004	11023004	11023004	1
151	GROMMET, RUBBER CS157, 3/4" ID 1-3/8" OD, 1/8"	110103919	110103919	110103919	110103919	110103919	110103919	110103919	110103919	110103919	110103919	1
152	NUT, HEX JAM 1-14	NHJ114	NHJ114	NHJ114	NHJ114	NHJ114	NHJ114	NHJ114	NHJ114	NHJ114	NHJ114	1
153	SCREW, SOCKET HEAD 3/8-16X3"	SSH381634	SSH381634	SSH381634	SSH381634	SSH381634	SSH381634	SSH381634	SSH381634	SSH381634	SSH381634	1

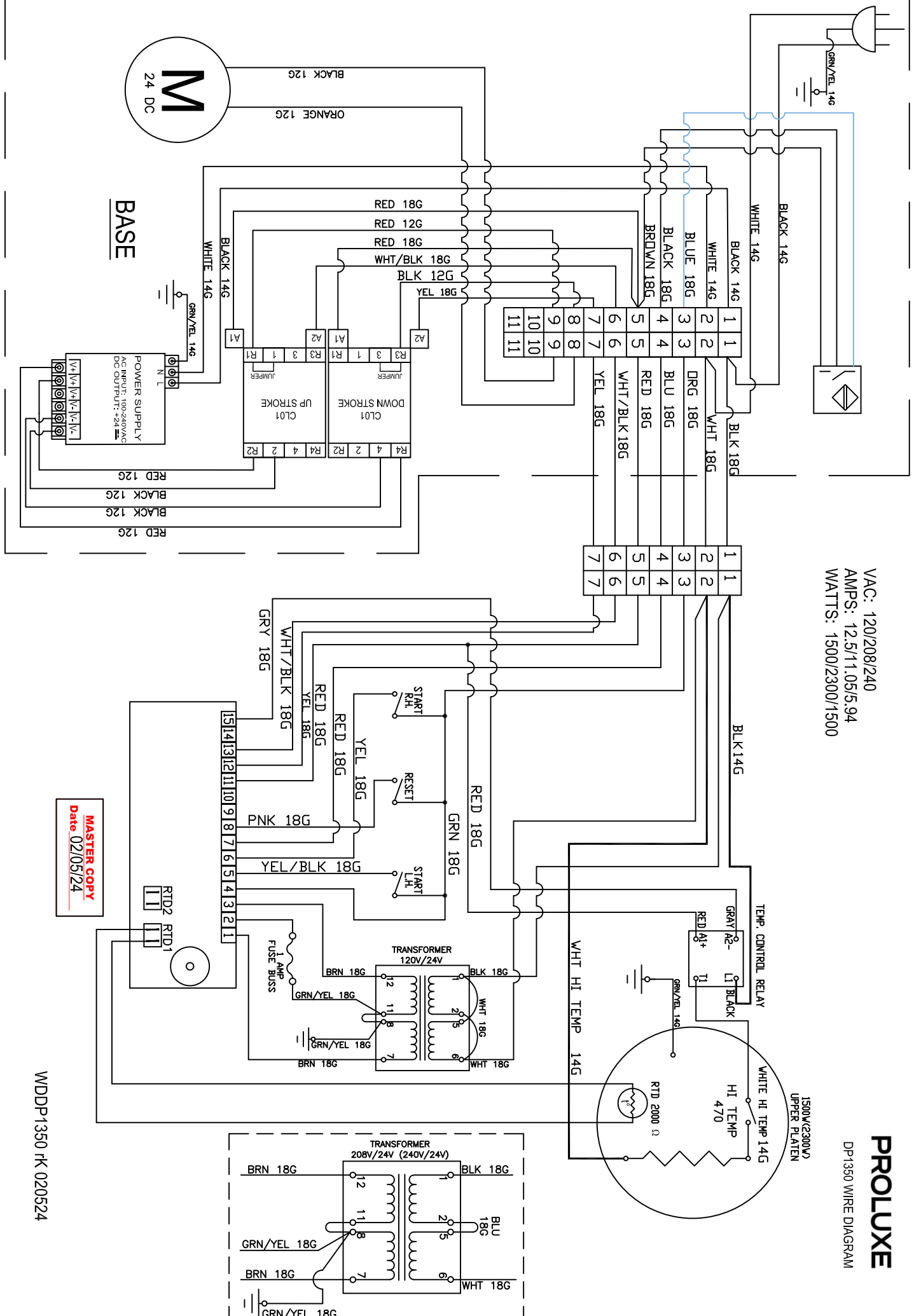
## PARTS LIST FOR DP1350

ITEM NO.	DESCRIPTION	DP1350A 120 ~ AC	DP1350TA 120 ~ AC	DP1350B 240 ~ AC	DP1350E 208 ~ AC	DP1350TE 208 ~ AC	DP1350CEB 240 ~ AC	DP1350CEC 220 ~ AC	DP1350TCEC 220 ~ AC	DP1350GCEC 220 ~ AC	DP1350TGCEC 220 ~ AC	QTY.
154	NUT, COUPLING 3/8-16X1-3/4", DP1300	NC3816134	NC3816134	NC3816134	NC3816134	NC3816134	NC3816134	NC3816134	NC3816134	NC3816134	NC3816134	1
A1	UPPER PLATEN COMPLETE ASSEMBLY 120V DP1300	110102531100	110079120AK	110102531101	110079208PAK	110079208AK	110102531101	110079220PAK	110079220AK	110079220PAK	110079220AK	1
A2	KITTED, UPPER PLATEN WITH WIRING ONLY	110102531200	110079120K	110102531201	110079208PK	110079208K	110102531201	110079220PK	110079220K	110079220PK	110079220K	1
A3	KITTED, LOWER PLATEN ASSEMBLY	11032A	11032TA	11032A	11032A	11032TA	11032A	11032A	11032TA	11032A	11032TA	1
A4	SWITCH, PROXIMITY SENSOR, KIT	110103K	110103K	110103K	110103K	110103K	110103K	110103K	110103K	110103K	110103K	1
A5	CRANK, ASSEMBLY	11061A	11061A	11061A	11061A	11061A	11061A	11061A	11061A	11061A	11061A	1
A6	START SWITCH ASSY MUSHROOM	11051845	11051845	11051845	11051845	11051845	11051845	11051845	11051845	11051845	11051845	2
A7	STOP SWITCH ASSY MUSHROOM	11051850	11051850	11051850	11051850	11051850	11051850	11051850	11051850	11051850	11051850	1
A8	DIGITAL CONTROLLER, ASSEMBLY DP1350	DP131052K	DP131052K	DP131052K	DP131052K	DP131052K	DP131052K	DP131052K	DP131052K	DP131052K	DP131052K	1
A9	HDRAULIC PUMP/ MOTOR WITH OIL CANISTER	DP13149K	DP13149K	DP13149K	DP13149K	DP13149K	DP13149K	DP13149K	DP13149K	DP13149K	DP13149K	1

VAC: 120/208/240  
 AMPS: 12.5/11.05/5.94  
 WATTS: 1500/2300/1500

# PROLUXE

DP1350 WIRE DIAGRAM



**MASTER COPY**  
 Date 02/05/24

WDDP1350 RK 020524

## Warranty & Return Policy

Proluxe warrants all products manufactured by it against defects in workmanship or materials from the date of purchase for a period of 1 year on parts and labor. This warranty applies to only equipment purchased and used in the United States.

Warranty period shall begin when equipment ships. Warranty travel will only be covered for 60 miles.

ALL WARRANTY SERVICE CALLS MUST BE APPROVED BY PROLUXE. IF THIS PROCEDURE IS NOT FOLLOWED, WARRANTY SERVICE WILL NOT BE COVERED. WARRANTY SERVICE WILL BE PAID ON STRAIGHT TIME, OVERTIME WILL NOT BE COVERED.

### EXCLUSIONS

Special Order Equipment and Accessories

Cannot be canceled and are not returnable unless defective within the terms of this warranty.

In no event shall Proluxe be liable for consequential damages arising out of the failure of any of its products if operated improperly or caused by normal wear or damaged by operator abuse.

Limited Lifetime Warranty on Heating Elements

If a replacement is needed, Proluxe will send the new part at no charge but labor will not

be covered unless the unit is still under the 1 year manufacturer warranty.

### RETURNED MERCHANDISE POLICY

Should it become necessary to return any of the company's products, the following instructions must be adhered to: First, contact our customer service department for approval and a return authorization number. Please have the serial number of your item available at that time. All merchandise must be shipped freight prepaid by customer or service agency. Subject to the inspection of the product by the company, a restocking charge of 20% of the Net purchased price paid to Proluxe will be assessed. Merchandise may not be returned for credit without prior written approval of Proluxe.

Collect shipments will not be accepted. No returns after 60 days of original shipment date on machines. Purchased parts may not be returned after 30 days. If upon inspection by Proluxe or its authorized agent it is determined the equipment has not been used in an appropriate manner, has been modified, or has not been properly maintained, or has been subject to misuse, misapplication, neglect, abuse, accident, unauthorized modification, damage during transit, delivery, fire, flood, act or war, riot or act of God, then this warranty shall be deemed null and void.

### TERMS & CONDITIONS

1. Price List prices are suggested retail prices and are shown in U.S. Dollars.

2. Terms of Payment: 1% 10 days, NET 30 days.

3. New Accounts: Satisfactory credit information must be provided before open account status can be extended.

Unless agreed otherwise, all shipments will be made C.O.D., Cash in advance.

4. Pricing: Prices, specifications, model numbers, capacities and accessories are subject to change without notice.

5. Freight/Routing: Method of shipment will be determined by Proluxe unless otherwise advised by purchaser.

6. Damaged Claims: All merchandise shipped at purchaser's risk. Inspection must be made by purchaser at time goods are received. If goods are damaged, the PURCHASER shall request that the agent of the transportation company make a written notation on the

proper shipping documents immediately and then file a claim for damages.

*Note: Goods damaged in shipping are non-returnable.*

7. Returns: Machines may not be returned after 60 days. Purchased parts may not be returned after 30 days. A restocking fee of 20% will be assessed on non-warranty returns.

8. Taxes: Prices indicated herein DO NOT include State, Federal, Local or foreign taxes or duties, nor do they include fees, permits, insurance or other levies, all of which are the responsibility of the purchaser.

9. All orders are subject to acceptance by Proluxe.

10. Possession of this price list shall not be considered an offer to sell.